



# Access Technology Ireland

## Integrated Security Solutions:

### • Gate Automation – Model GCK

The gate operator GCK is installed at the foot of the gate, perpendicular to the centre line of the gate hinges.

The working mechanism is fully concealed under the ground. The all-in-one design makes this unit easy and quick to install

The motor pump and the jack are in the same enclosure, no tubes outside and no need to fill with oil as the unit is supplied ready to work and factory pre-oiled.

Being fully buried under the gate, the valves are safe from misuse and vandalism.



- Networked Access Control Solutions.
- Card / Code Access Systems.
- I.D. Badge Systems.
- Traffic Barriers.
- Coin / Token Car Parking.
- Turnstiles.

## Key Features

- Two-way locking in open and close directions.
- Vandal resistant.
- Stainless steel and aluminium cover plates.
- Complete choice of control; local or remote pushbutton, card access, vehicle ID systems, remote transmitter units, keyswitch, programmable timelock etc.
- Manual release valve on the hydraulic pump enables the gate to be operated in the event of a power failure
- Ease of maintenance – minimum time / cost.

- Gate Automation.
- Automatic Door Operators.
- Electric Locking.
- C.C.T.V.
- Intercom Systems.



*design, installation and commissioning of integrated security systems.*

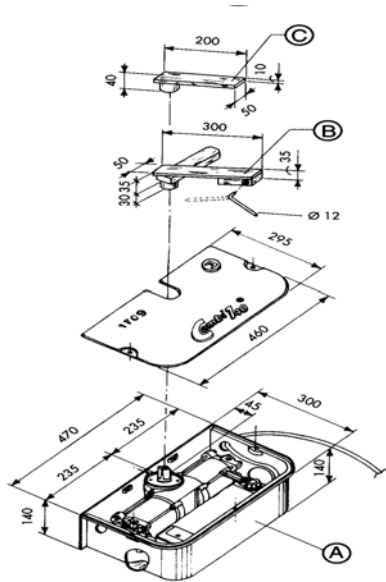
# General Specification

- **Electric Motor.**
- Horse power – 0.25 HP (0.18 Kw).
- Static gate weight – 700 Kg.
- Voltage – 230 V.
- Absorbed current – 1.2A.
- **Oil-Hydraulic Piston.**
- Rated torque – 137.3 N.m (14 Kgm at 15 bars).
- Rotation time – (110°) 23 secs, (175°) 18 secs.
- Working pressure – 10 Bars (1 MPa).
- Working temperature – -20°C +80°C.

## Options and Accessories

- Safety vehicle induction loops, traffic light systems, access control, audio systems, etc.
- Radio transmitters / receiver facility to allow remote (e.g. in-car) operation.
- Card access / token reader / intercom mounting posts in complementary designs.
- Mounted warning lights.
- Braking or non-braking and locking or non-locking versions available.
- Choice of 110° and 175° rotation angle.

## Technical Specification



**A.** The combination motor and jack of the GCK employs the latest technology with a quiet-running steel lobe pump at its heart, creating and holding greater pressures for hydraulic locking and drive than most other underground gate operators.

**B.** Gate fixing device (locking version) is welded or screwed to gate foot. Lock can be released by special key.

**C.** Gate fixing device (non-locking version) is welded to gate foot.

**D.** Fix to the ground proper gate stops both in the open and closed position.



### Belfast Office:

A.T.(Ireland) Ltd  
24 Mallusk Enterprise Park  
Newtownabbey  
Co. Antrim  
BT36 4GN

Tel: +44 (0)28 9083 6622  
Fax: +44 (0)28 9084 4588

Website: <http://www.atireland.co.uk>

E-mail: [office@atireland.co.uk](mailto:office@atireland.co.uk)

### Dublin Office:

A.T.(Ireland) Ltd  
9 Ashford Downs  
Ashford  
Co. Wicklow

Freephone: 1800 284283  
Tel: 0404 42041  
Fax: 048 9084 4588